

# Aseptic leakage valve ADV

## Functionality

ADV valves are the simplest form of aseptic leakage valves. The leakage chamber is created by two seals. Through the two side valves on the leakage chamber, the intermediate chambers can be steamed, the condensate drained, and leakage problems detected. The valve seats are moved using a pneumatic hoisting mechanism.

## Use

- Valves are designed for use in the food, dairy and beverage, pharmaceutical, chemical, and cosmetics industries
- Used as a safe, reliable, and robust flow control device in aseptic production and bottling plants
- The modular valve design allows integration into diverse process applications
- Operating temperatures up to +140°C (+284°F)
- CIP (cleaning in place) and SIP (sterilizing in place) capable up to +140°C (+284°F)

## Design Characteristics

- Modular design, consisting of the three main

components: housing, internal assembly, and actuator

- The actuator and internal assembly are connected to the housing with a three-piece clamp
- Low-maintenance, service-friendly, and hygienic design
- All product contact surfaces are made of AISI 316L stainless steel (materials certificate available upon request) with a surface finish of 0.8 µm Ra that meets all common hygienic standards
- Complete actuator made of stainless steel
- Customer-specific materials and surface finishes available upon request
- Valve connections can be provided with aseptic flanges, screw connections, or clamps
- Integrated steam barrier

## Valve Housing

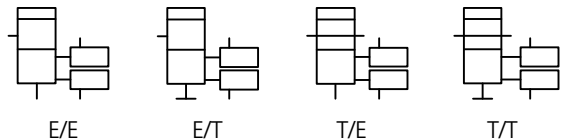
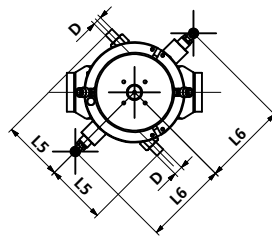
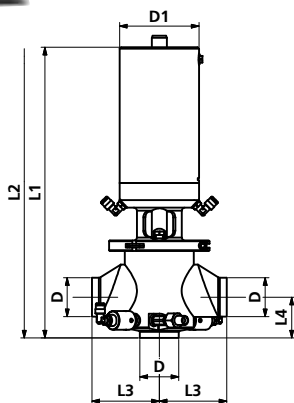
The housing is available with either two, three, or four port connections. The valves are produced with standard butt-weld connections by default.

## Internal Assembly

The internal assembly has two screwed-on seat seals. The top one is made of Tefasep® (alternatively PTFE) and the bottom one of EPDM.

## Actuator

The standard version of the pneumatic actuator is designed as spring-closing / air-opening (NC). Alternatively, a variant with a venting cylinder (AZ) is available.



## Dimensions of the pipe connections (acc. to DIN 11866)

DN	25	40	50	65	80	100
DIN 11866 A (DIN 11850)						
Abm. Ø x s (mm)	29x1.5	41x1.5	53x1.5	70x2	85x2	104x2
DIN 11866 B (ISO)						
Abm. Ø x s (mm)	33.7x2	48.3x2	60.3x2	76.1x2	88.9x2.3	114.3x2.3
	1"	1½"	2"	2½"	3"	4"
DIN 11866 C (OD)						
Abm. Ø x s (mm)	25.4x1.65	38.1x1.65	50.8x1.65	63.5x1.65	76.2x1.65	101.6x2.11
Abm. Ø x s (inch)	1.0x0.065	1.5x0.065	2.0x0.065	2.5x0.065	3.0x0.065	4.0x0.083

## Dimensions of the aseptic leakage valve ADV

DN	25	40	50	65	80	100
D1	86	86	106	106	144	189.5
L1	295.5	308	388	388	444	450
L2	430	450	525	525	605	650
L3	85	85	90	90	100	135
L4	39	45	54.5	63	75.5	90
L5	81	81	81	81	87	81
L6	100	100	106	113.5	126	136

Other nominal diameters available upon request



Aseptic leakage valve with pneumatic actuator