

Aseptic mini valve AMV

Functionality

Aseptic mini valves are used for the monitored opening and closing of pipelines in aseptic processing plants. A welded stainless steel folding bellow is used to hermetically seal the valve spindle from outside contamination. This special design and the durable valve seat seal made of Tefasep® enables optimum process security. The ultra-compact and low dead-space design is suited for many diverse applications in pilot plants and miniature plant construction.

Use

- Valves are designed for use in the food, dairy and beverage, pharmaceutical, chemical, and cosmetics industries
- The valve is particularly suited for use in automated, aseptic sampling systems and pilot plants
- Operating temperatures up to +150°C (+302°F)
- SIP (Sterilizing-In-Place) capable, up to +160°C (+320°F)

Design Characteristics

- Modular design, consisting of the three main components: housing, internal assembly, and actuator
- The actuator and internal assembly are connected to the housing with a two-piece clamp
- Low-maintenance, service-friendly, and hygienic design
- All product contact surfaces are made of AISI 316L stainless steel (materials certificate available upon request) with a surface finish of 0.8 µm Ra that meets all common hygienic standards

- Complete actuator made of stainless steel
- Customer-specific materials and surface finishes available upon request

Valve Housing

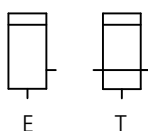
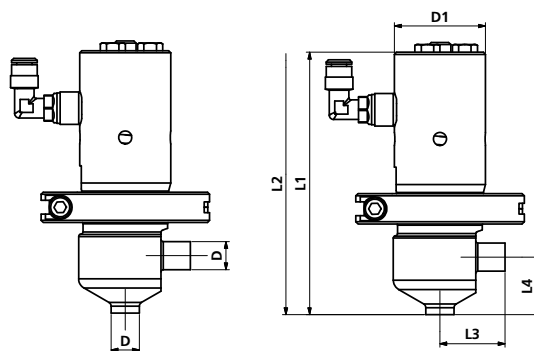
The housing is available with either two or three port connections. The valves are produced with standard butt-weld connections by default, however other connection options are available upon request.

Internal Assembly

The internal assembly is equipped with a shrunk-on valve seat seal. In addition to the standard sealing material Tefasep®, a PTFE seal is also available.

Actuator

Mini valves are equipped with a spring-closing / air-opening (NC) pneumatic actuator. Optionally the actuator can be equipped with an open feedback unit M8.



Aseptic mini valve with pneumatic actuator

Dimensions of the pipe connections (acc. to DIN 11866)

DN	06	08	10	15	20
DIN 11866 A (DIN 11850)					
Dim. Ø x s (mm)	8x1	10x1	13x1.5	19x1.5	23x1.5
DIN 11866 B (ISO)					
Dim. Ø x s (mm)	10.2x1.6	13.5x1.6	17.2x1.6	21.3x1.6	26.9x1.6
	¼"	⅜"	½"	¾"	1"
DIN 11866 C (OD)					
Dim. Ø x s (mm)	6.35x0.89	9.53x0.89	12.7x1.65	19.05x1.65	25.4x1.65
Dim. Ø x s (inch)	0.25x0.035	0.375x0.035	0.5x0.065	0.75x0.065	1x0.065

Dimensions of the aseptic mini valve AMV

DN	06	08	10	15	20
D1	42	42	42	42	42
L1	121	121	121	121	121
L2	180	180	180	180	180
L3	40	40	40	40	40
L4	11	12	13	16	18